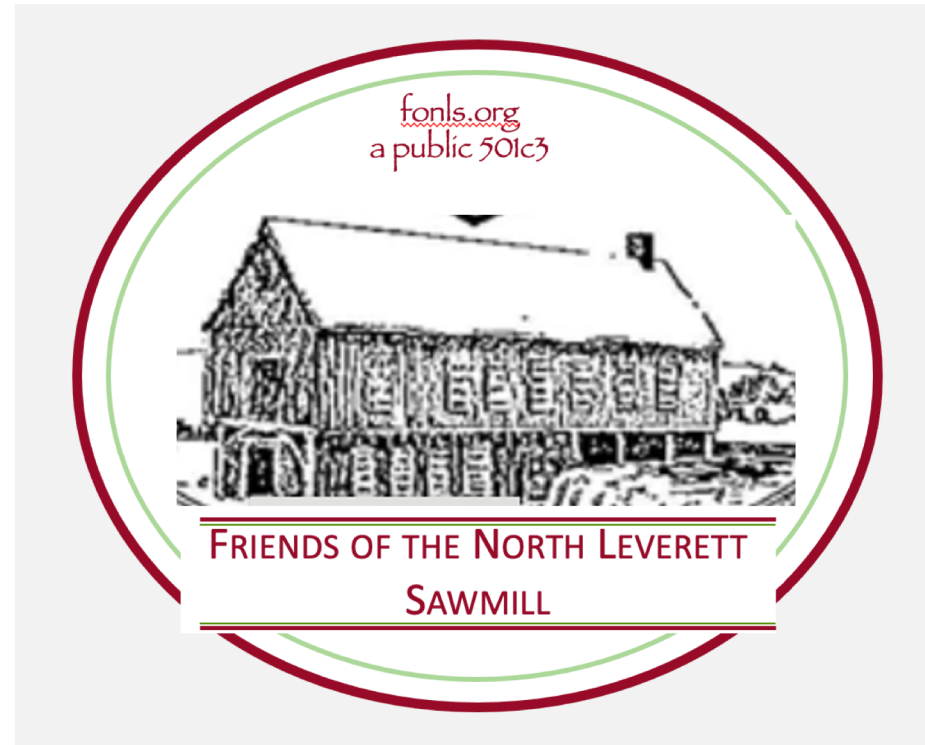


# Proposal to create a Heritage Park & Nature Trail



Leveraging previous work sponsored by the Leverett Historical Commission's program:  
*A Sense of Where You Are*



Slarrow Sawmill  
with Graves Sugar  
Shack in the  
foreground



Current condition of  
Graves Sugar Shack



We propose to create a Heritage Park and Nature Trail on land adjacent to the 0.5 acres that contains the Slarrow Sawmill parcel:

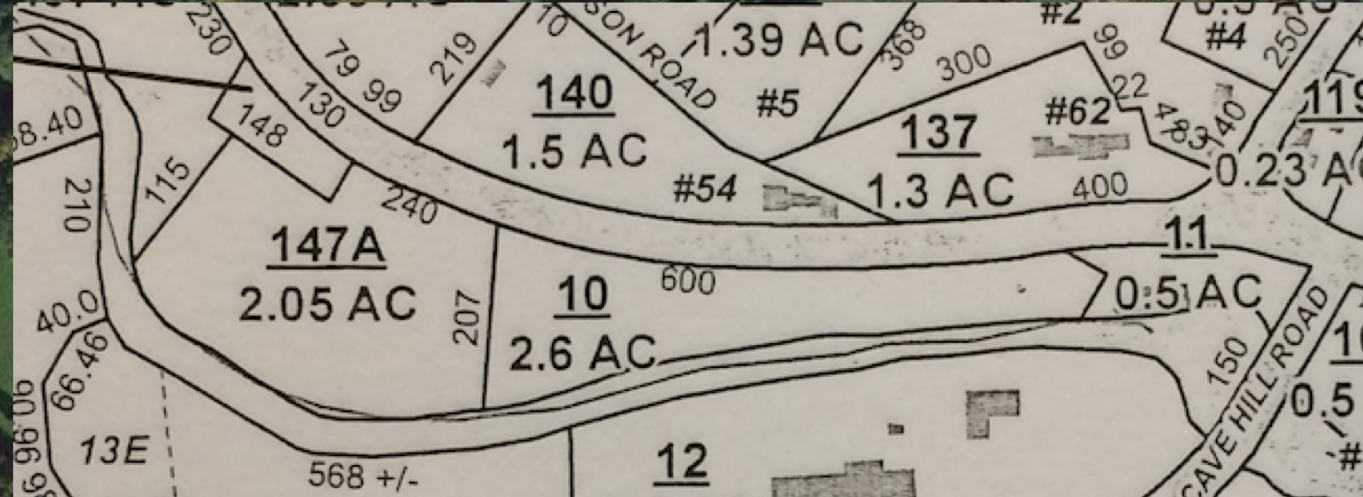
- 2.6 acre parcel owned by FONLS
- 2 acre parcel owned by the Town of Leverett

-We plan to seek CPA funds for this

-Our request is for a letter that indicates the historic value of this site and support for the project.



Lot 10 , which is owned by FONLS,  
and Lot 147A, which is managed  
by the Conservation Commission,  
encompass remnants of Leverett's  
industrial past proposed for a  
Heritage Park and Nature Trail

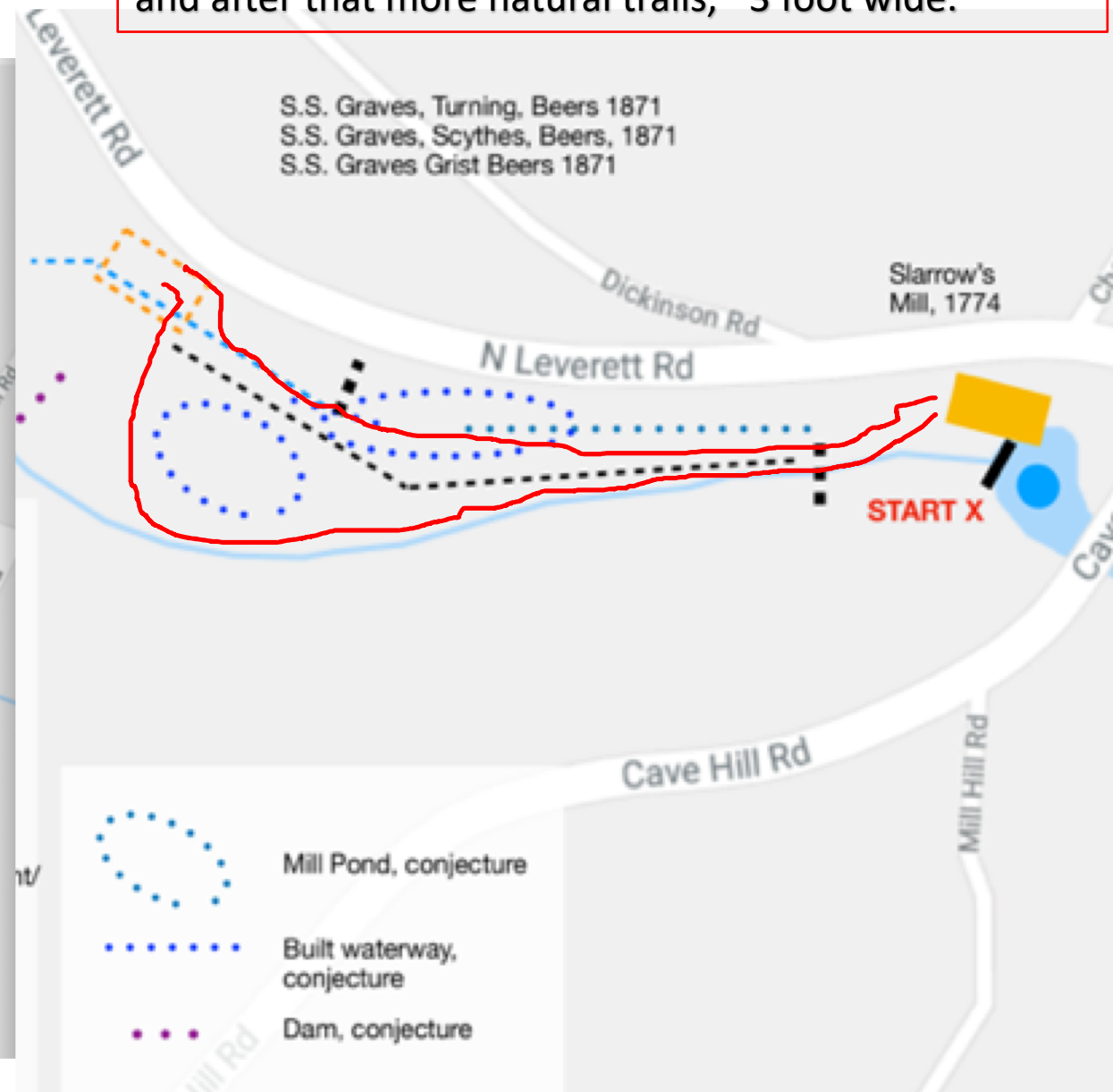
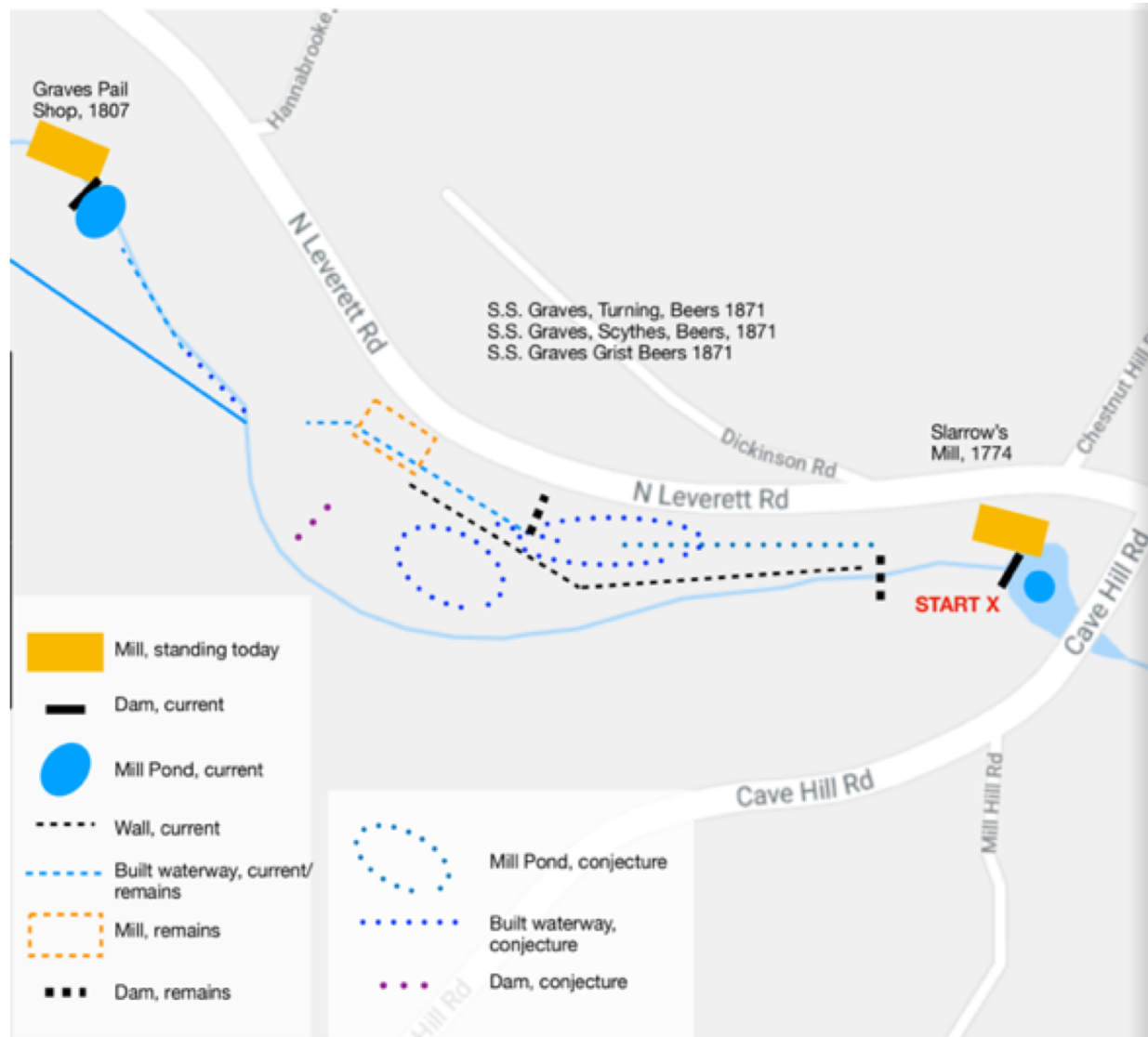


Google Earth image of putative  
Heritage park and Nature Trail  
boundary in red. This lies in  
North Leverett near the junction  
of Cave Hill and N. Leverett Roads  
and is bound on the other side by  
the sawmill river

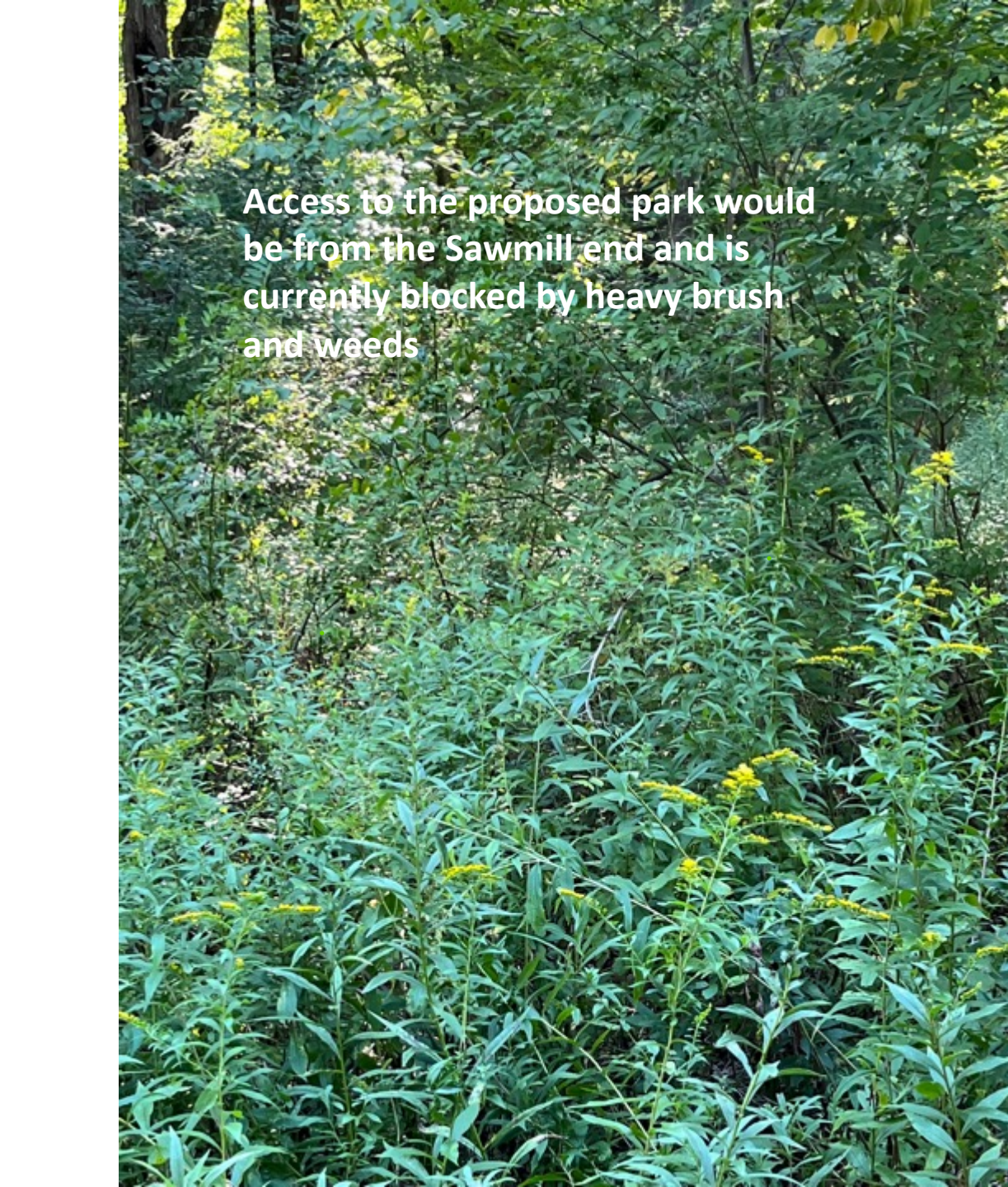


Rendering of the low dam, levee, mill pond and Graves Ironworks prepared by Pleun Bouricius and Eva Gibavic. These historic remains would be contained within the Heritage Park. *Rendering Prepared for Leverett Historical Commission*


Approximate location of proposed trails marked in red. These follow trails are currently present on lots 10 and 147A. We plan on a constructed trail to the levee start and after that more natural trails, ~3 foot wide.







Access to the proposed park would be from the Sawmill end and is currently blocked by heavy brush and weeds



We hope to create an access route (constructed trail) for the first 400 foot possibly of crushed stone or tree bark chippings as shown here for a trail at Lakeview National Preserve wetlands area by Lake Ontario.





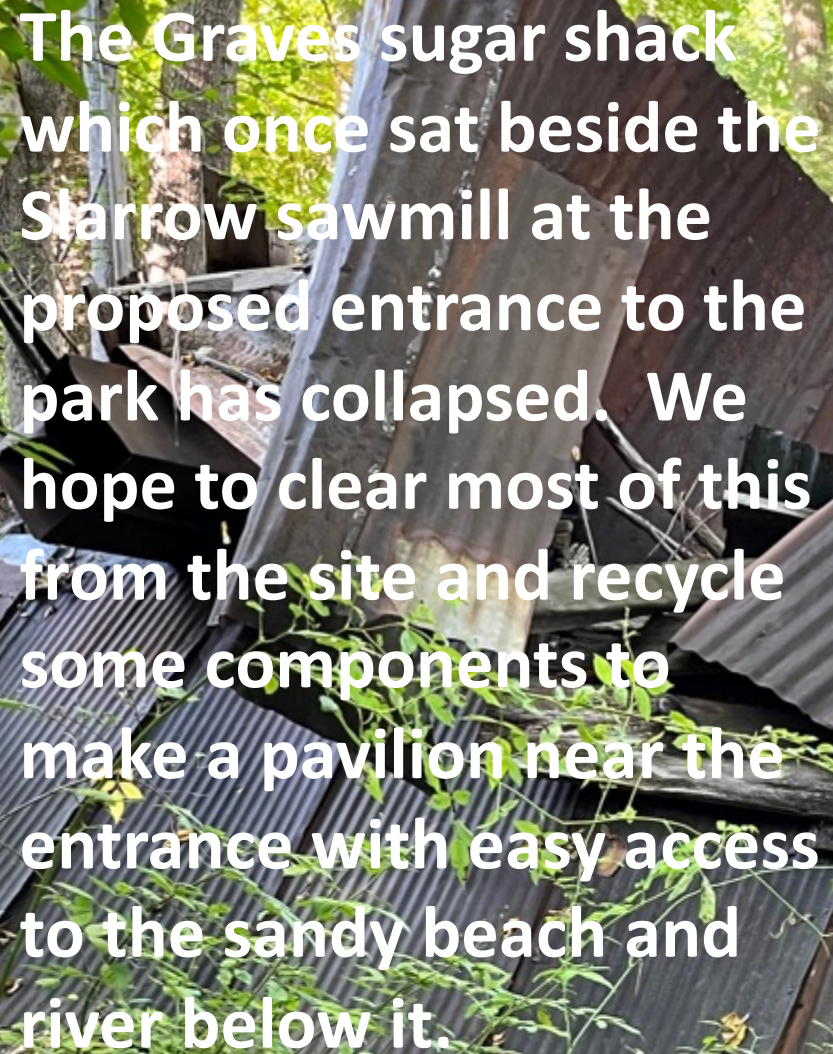
Example of an historical sign/information board from Sacketts Harbor Battlefield, Lake Ontario:

They would include maps, drawings and text such as this

# Sign boards proposed:

- At the trailhead a map of the paths, the historic sites, and reflection benches
- At the trailhead, the history of the Slarrow Sawmill (located just behind the trailhead) & a diagram of where the 14 mills were located along the Sawmill River
- Sugar shack from the painting we are acquiring (see slide #2) and explanation of process and equipment needed (some artifacts also will be at this site and we propose to use some of the remnants to create a small pavilion on the footprint)
- Stone and earthen levee, ponds and canals and explanation of purposes
- Graves iron works and black smith shops: diagram of remains including the dam, canal and trip hammers and their purpose and the role the ironworks played in local agriculture – may be more than one signboard for this
- Pre-colonial usage of the land by native Americans (during the contact period)
- Flora and fauna signs for the land and river including identifying native, invasive, and endangered species etc. (probably 2 signs)
- Sign for the new plantings proposed for pollinators and re-wilding trees

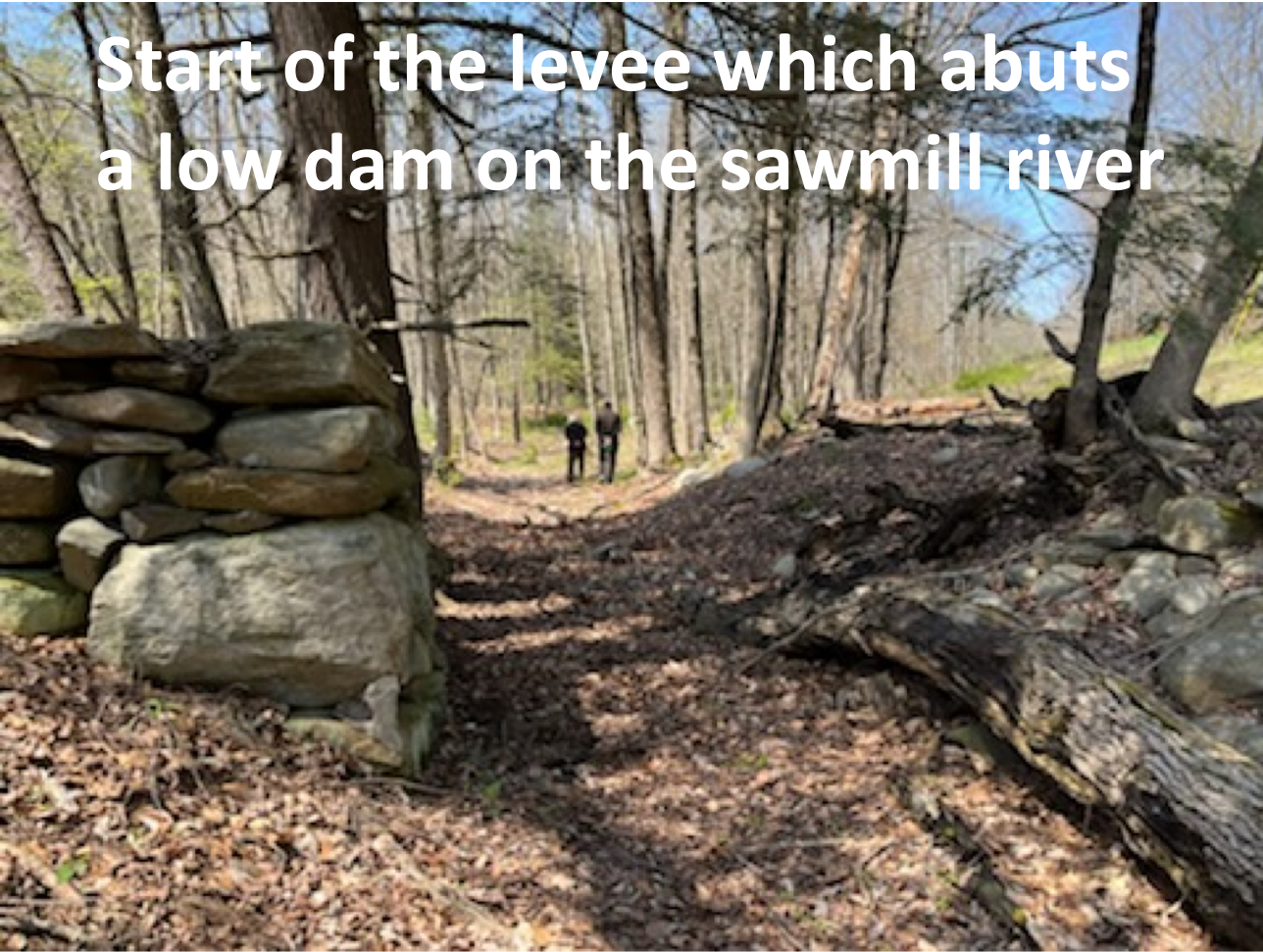




The Graves sugar shack which once sat beside the Starrow sawmill at the proposed entrance to the park has collapsed. We hope to clear most of this from the site and recycle some components to make a pavilion near the entrance with easy access to the sandy beach and river below it.







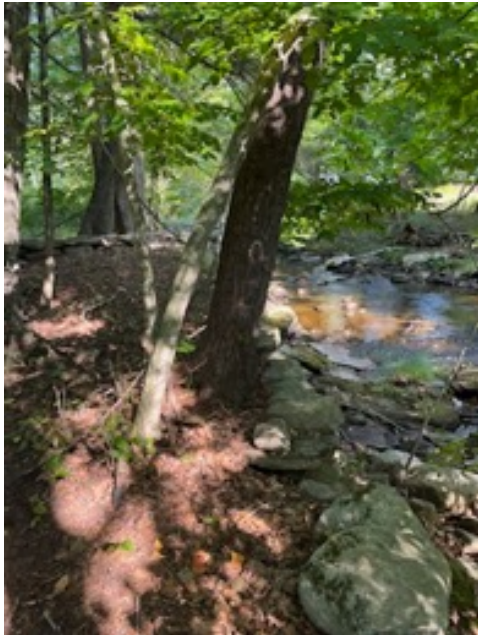
Start of the levee which abuts  
a low dam on the sawmill river



A view of the laid up stone  
wall of the levee as seen  
from the sawmill river side



Trees that are either threatening or have already brought down part of the levee's laid up stone construction. We hope to arrest this process by cutting some 30 trees above ground level and sealing their growth surface with varnish or another substance as advised.



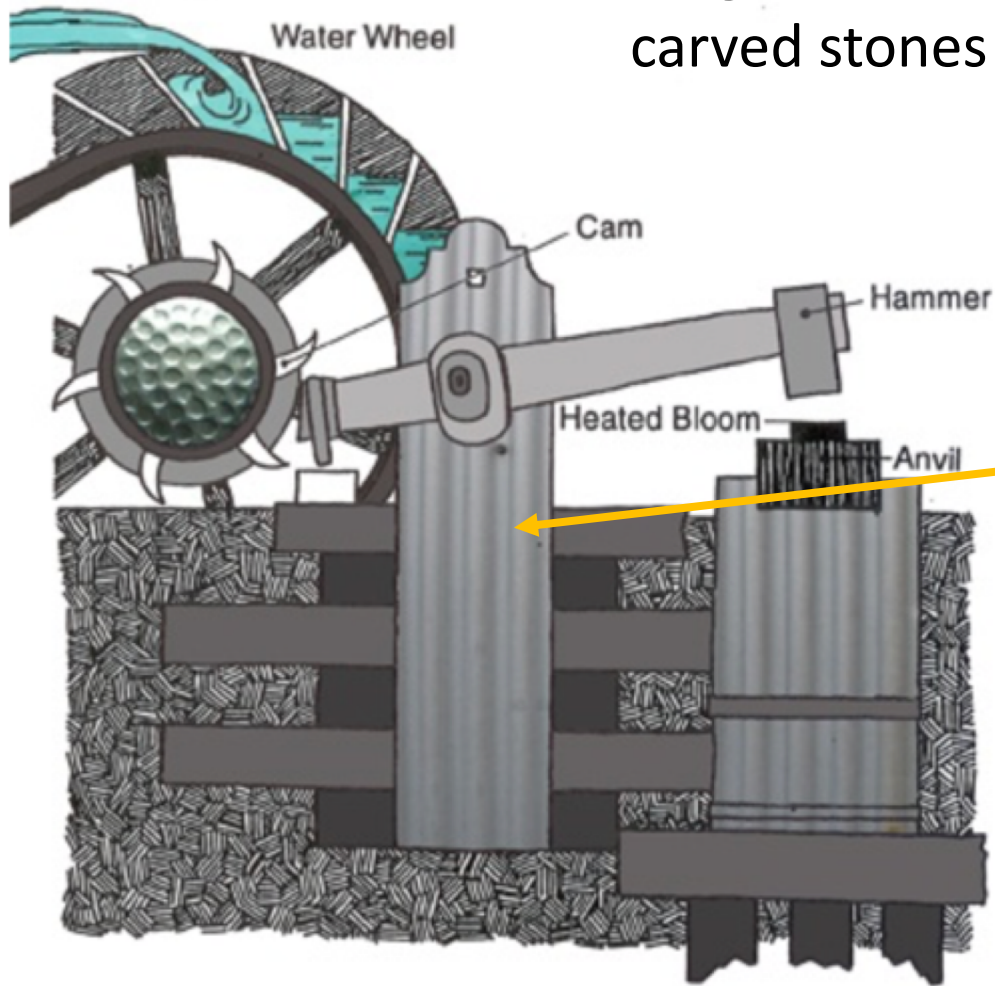


Left panel - Rounding the levee wall from the river side;  
Middle panel - bedframe and other rubbish accumulated at the outflow from the canal exiting the levee to the ironworks,  
Right panel - support for a trip hammer now leaning into the canal where water that once powered the trip hammers flowed. We propose to clean up this site and place an information board





Diagram of a trip-hammer showing the role of the carved stones found on the Graves ironworks site



[https://commons.wikimedia.org/wiki/File:Trip-hammer\\_forge.jpg](https://commons.wikimedia.org/wiki/File:Trip-hammer_forge.jpg)



## Graves Ironworks – stone details





End of Town-owned property:  
green stakes mark the small parcel (#148 on assessors map, slide #4) that is separate from the Town-owned lot; it abuts the road; mowed area is part of a neighboring lot and subsequent to this is the site of the pail factory (now a house)



Green stakes



Just subsequent to the Town-owned property is the canal created to power the Pail Shop (currently a house). It diverts water from the River. This is visible from, but not included in, the proposed park area.





We also propose to remove some invasive shrubs and enhance the wooded areas with demonstration plantings of:

- Native plants that attract pollinators
- Trees that represent re-wilding of areas or regenerative agriculture





Phases	Item description	
1	Website & Facebook page to inform public and solicit input and volunteers	
2	Remove brush and prune trees at trail entrance near sawmill so clearly marked	
3	Remove weeds & brush & fallen wood from remote parts of the trail	
4	Put up small trail blazes along entirety of trails	
5	Clear rubbish from the Graves ironworks site	
6	Remove trees & brush threatening the levee (30 trees against the stones; many more trees further in the earthen part of the levee but not proposing to remove them	
7	Build the 3 ft pathway with retaining edges at trail entrance near Sawmill (~400 ft) which is higher ground	
8	Develop the informational signage & have them commercially produce	
9	Install signs and benches along the trail intermittently	
10	Build stairway or ramp or bridge at the Graves ironworks for access	
11	Revitalize sugar shack as a small pavilion	
12	Improve ingress and egress of parking area at the Mill for safety	